

RETAIL WEIGHING SOLUTION™

SW-II LED

Weighing & Counting Scale

As a simple weighing scale with a maximum of 1/15,000 resolution, SW-II is suitable in a variety of industrial environments, including traditional market, with its low body and ergonomics design.



High Resolution for Weighing (Max. 1/15,000, Certificate 1/3,000 dual)

Easy Grab Body

USB Port for COMM. & Power

Rear Display for Customer

Easy Grab Body



Rear Display



USB Port



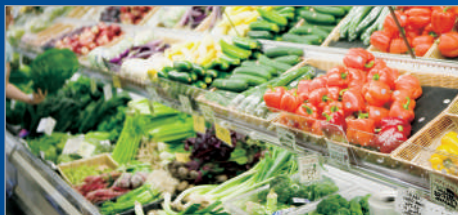
Scan with your smartphone
to find more products



CAS
www.globalcas.com

SW-II LED

Weighing & Counting Scale



FEATURE

- High Resolution for Weighing (Max. 1/15,000, Certificate 1/3,000 dual)
- Easy Grab Body
 - Ergonomics design with a low body and comfortable handling



- USB Port for COMM. & Power (Option)



- Rear Display for Customer (Option)



- Rechargeable Battery (Option)
 - A maximum of 1,000 hours when used with Mn or Pb battery together

OPTION

- RS-232 (Print, Command)
- Rear Display
- Rechargeable Battery & Adaptor
- USB Port
- SUS Tray

APPLICATION

- Open market, Farm, Industrial Environment

SPECIFICATIONS

MODEL	SW-II-03	SW-II-06	SW-II-15	SW-II-30
Capacity	3kg	6kg	15kg	30kg
e (Non-Certi.)	0.5g, 0.2g, 0.1g	1g, 0.5g, 0.2g	2g, 1g, 0.5g	5g, 2g, 1g
e (Certi.)	0.5/1(g) Dual	1/2(g) Dual	2/5(g) Dual	5/10(g) Dual
Resolution	1/3,000 - 1/15,000 Dual Interval, Certi.(1/3000-1/15,000)			
Display	6Digit LED (115x39.5mm)			
Symbols	STABLE, ZERO, TARE, g, kg, lb, oz, PCS, Low Battery HI / OK / LO & PCS			
Functions	Hold, Unit Conversion, Counting-Counting SampleRange:10-100, 200, 300, 400, 500 Weight Comparison Function : HI, OK, Low, Sleep Mode Function			
Operation Time	Approx. D size Battery = 500hr Or Pb Battery = 450hr (Backlight off) Approximately 1,000 hours consecutively when equipped with Mn Battery and Pb Battery altogether			
Option	RS-232 (Print , Command), Rear Display Rechargeable Battery And Adaptor, USB Port, SUS Tray			
Power	Mn(500hr), Pb(500hr), Mn+Pb(1000hr)			
Dimensions	245 (W) x 280(D) x 110(H)			
Platter Size	225(W) x 190 (D)			
Product Weight	2.44 kg			

DIMENSION

